



Hadley Grange, Church Langley, Harlow, CM17 9PQ

Geoffrey Matthew Estates are pleased to offer for Let this two bedroom terraced house in the popular area of Church Langley. Double bedrooms. Kitchen/breakfast room. Enclosed Garden. Off road parking.

Please contact the Agent to register your interest in this property.

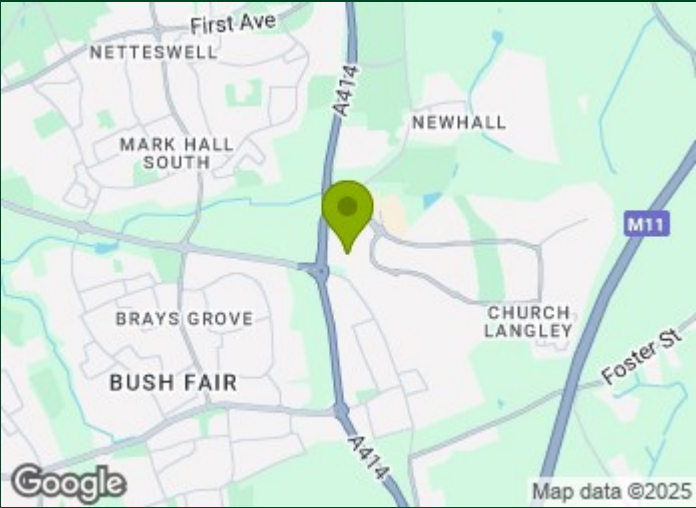
A holding deposit equivalent to one week's rent is payable in order to apply for this property.

£1,495 Per Calendar Month

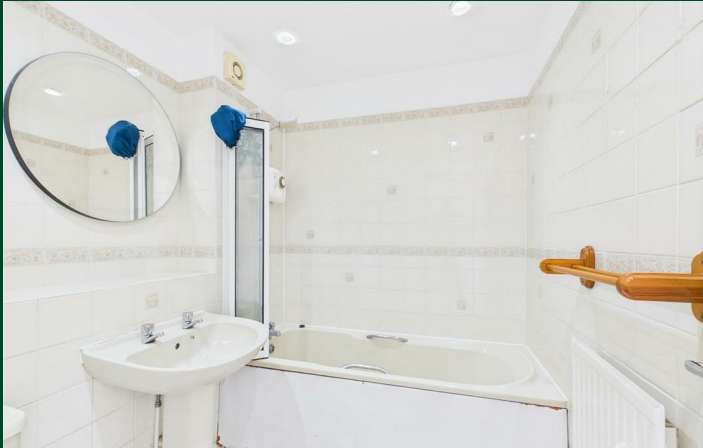
Hadley Grange, Church Langley, Harlow, CM17 9PQ



- Two Bedroom Terrace House
- Kitchen/Breakfast Room
- Available Late September
- Double Bedrooms
- Unfurnished
- Fitted Wardrobes
- Off Road Parking



[Directions](#)



Floor Plan

